

New product

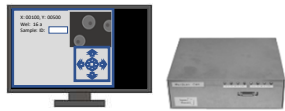
Integrated system of microscope stage and camera

WelScan CAM

Single GUI controls Camera
and XY stage
(travel range 110mm x 75mm)

Automatic file name with Well number makes data management easy

Product Items



Controller
(Control BOX +GUI software)



USB3 camera
imager size: 1/2" ~1"



Well plate mountable XY stage
Travel range X:110mm, Y:75mm

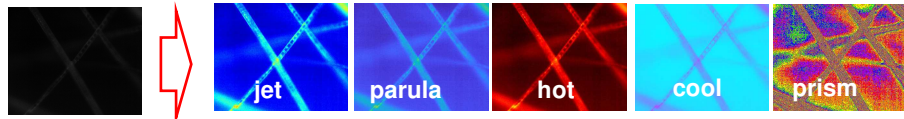
Features

① convenient functions by integration of XY stage and camera

- Well number is indicated on screen.
- Automatically, information of well# and positions are added into file name of captured image.
- XY stage destination can be made by well# input.

② novel image processing functions are included

- Defect removal and median filter (3x3, 5x5, and 7x7) are included
- The following 5 color mapping are included for easy image recognition and image enhancing



Original image

Enhanced image

③ external trigger control function is equipped

- 2 TTL level signal output ports are equipped for external device control such as illumination

Specs

- Well number function is available for 24, 96 and 384 well plates
- Adaptable microscope: Olympus CKX53*, IX-73, Nikon Ti, Nikon Ts2R
- Sensor type: 1/2"~1.0" CMOS image sensor (monochrome or color)
- * XY stage for Olympus CKX-53 is available in Feb, 2022

Demo movie

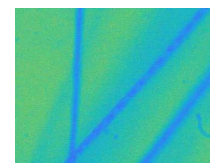


Image enhancing with colormap
<https://vimeo.com/576133232>

Price

- 20,000 USD (1/2" camera)
- 21,000 USD (1.0" camera)



A laser and imaging company located in Kanagawa, Japan

Pinpoint Photonics, Inc.

Marine Bldg. #803, 4-23 Kaigan-dori, Naka, Yokohama Kanagawa 231-0002 Japan
E-mail: koichiro.kishima@pinpointphotonics.com

